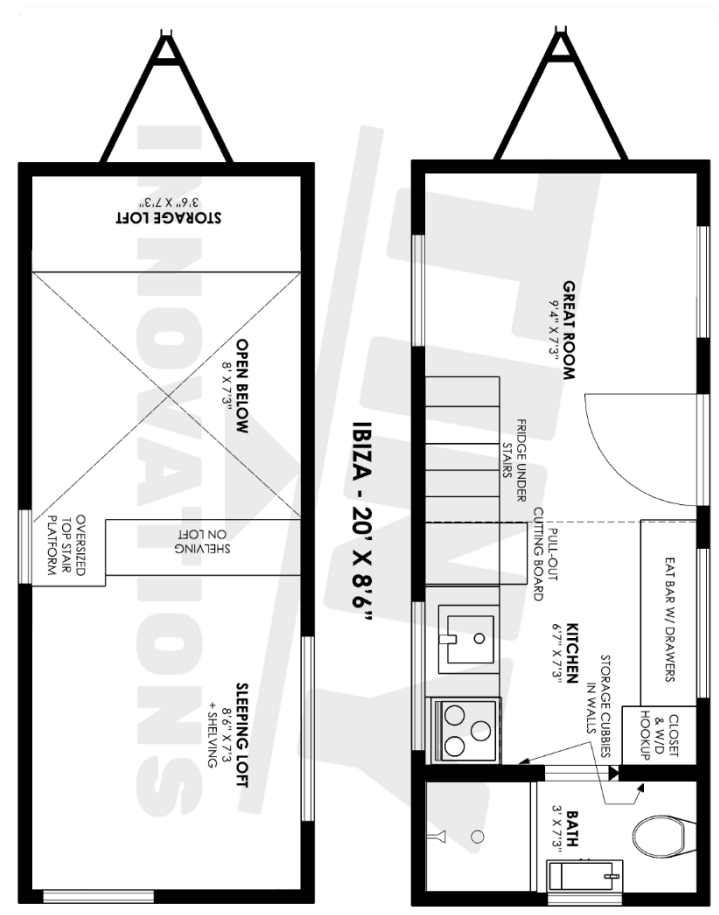




# TINY INNOVATIONS

is proud to present:

*Ibiza*



# Ibiza

## 20- foot Model

Includes:

**Trailer** - certified hand-built chassis with trailer brakes and highway lighting, DOT approved,  
**RVIA Certification**  
**1 Year Limited Warranty**  
**Framing** - 2x4 dimensional lumber, CDX plywood w/ shed roof  
**Roofing** - standing seam metal roofing with your choice of color from manufacturer's Selected palette  
**Moisture barrier** - DuPont Tyvek HomeWrap or Fortifiber WeatherSmart  
**Exterior siding** - LP siding  
**Insulation** - closed cell spray foam in ceiling, fiberglass batting in walls, and rigid foam in floor  
**Inside cladding** - knotty pine tongue and groove  
**Interior Trim** - 1" x 4" paint grade  
**Interior and exterior paint/stain** (colors of your choice, deluxe Sherwin-Williams) one body and one trim color and one door color  
**Windows** - vinyl energy efficient windows  
**Sleeping loft** - with 1 ladder  
**Flooring** - luxury vinyl tile (LVT) flooring  
**Cabinets** - cabinets and shelving uppers in either flat panel or shaker style stained natural  
**Hardware** - your choice of brushed nickel or chrome finishes  
**Countertops** - one slab 1 in. thick butcher block  
**Appliances** - high end energy efficient stainless steel - 1 mini refrigerator, 1 propane cook top range and stove combo  
**Kitchen sink** - stainless steel sink and faucet with pull down head  
**Bathroom sink** - 18-24" vanity cabinet with porcelain sink and one faucet  
**Shower**- Polypropylene shower surround with pan and bathroom vent fan  
**Nature's Head composting toilet**  
**One electric wall heater**  
**Water Heater** -gas (tankless)  
**One freshwater inlet**  
**Lighting** - LED recessed lights (Up to 10)  
**Doors** - 1 interior sliding panel door, 1 exterior fiberglass door  
**Hanging closet**



*Customize your own at:*

**INNOVATETINY.COM/IBIZA**

Pricing starts at \$59,000.00

Contact us today at:  
1-866-GOT-TINY (468-8469)  
or  
sales@innovatetiny.com